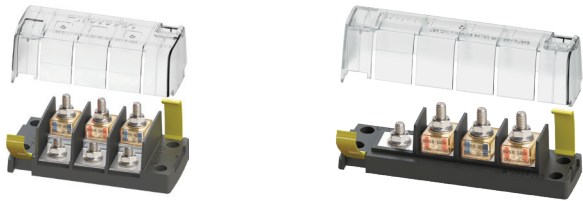


MRBF SURFACE MOUNT FUSE BLOCKS



- Accommodate 3 MRBF fuses for consolidated high amperage circuit protection
- Clip-on cover insulates terminal connections
- Suitable for gas engine compartments

Insulating cover satisfies ABYC/USCG insulation requirements.

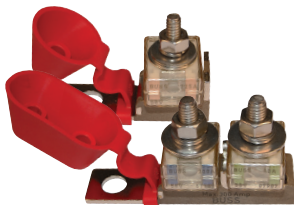
Max Voltage: 58VDC - **Max Amperage:** 300A/block, 240A/circuit

Terminal Stud: 5/16" - **Recommended Torque:** 100 in-lbs.

Requires #10 mounting screws. - **Fuses sold separately.**

PART NO.	MFG#	DESCRIPTION
3260014	5196-BSS	3 Common Circuits
9933-327	5194-BSS	3 Independent Circuits

TERMINAL FUSE BLOCKS MRBF



- Isolated stud design uses standard M8 (5/16") hardware and permits stacking of terminals
- Fits 3/8" battery posts
- Provides high current protection in tight space constraints
- Weatherproof—suitable for small open-cockpit boats and other harsh environments
- Insulating cap prevents accidental shorts
- Fuse sold separately

Maximum Voltage: 58VDC **Maximum Amperage:** 300A DC

Terminal Stud: 5/16" **Recommended Torque:** 75-lbs (Max)

Fuses Available: 30-300A DC

PART NO.	MFG#	DESCRIPTION
3260010	5191-BSS	Single Stud
3260012	2151-BSS	Double Stud

TERMINAL FUSES MRBF



- Interrupt Rating:** 10,000A at 14VDC
5,000A at 32VDC
2,000A at 58VDC
- Maximum Voltage:** 58VDC

Interrupt Rating satisfies ABYC requirements for DC Main circuit protection on large battery banks Ignition protected—safe for installation aboard gasoline powered boats. Clear window—visual indication of blown condition Colour coded.

- Meets SAE J1171 external ignition protection requirements
- Rated IP66—withstands water from heavy seas

PART NO.	MFG#	DESCRIPTION
3260015	5175-BSS	30A
3260016	5176-BSS	40A
3260017	5177-BSS	50A
3260027	5178-BSS	60A
3260018	5180-BSS	75A
3260019	5181-BSS	80A
3260028	5182-BSS	90A
3260020	5183-BSS	100A
9933-286	5184-BSS	125A
3260022	5185-BSS	150A
9933-288	5186-BSS	175A
3260024	5187-BSS	200A
3260025	5189-BSS	250A
3260026	5190-BSS	300A

FUSE BLOCK SAFETY HUB



Ignition protected fuse block with screw terminations. Safe for use on both diesel and gasoline powered boats, Reduces wiring connections, and consolidates up to ten fused circuits. It can be used for Main or Branch DC power distribution.

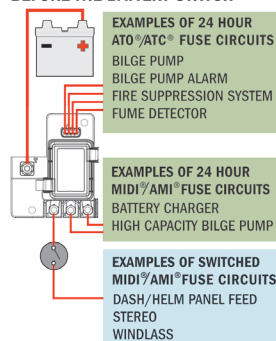
- The SafetyHub 150 has Four positions for 30A–200A AMI/MIDI fuse blocks ideal for high-amp circuits and Six slots for 1A–30A ATO/ATC fuse ideal for low-amp circuits.
- The SafetyHub 100 has Three positions for 30A–200A AMI/MIDI fuse blocks ideal for high-amp circuits and Four slots for 1A–30A ATO/ATC fuse ideal for low-amp circuits.

All Fuses are sold separately.

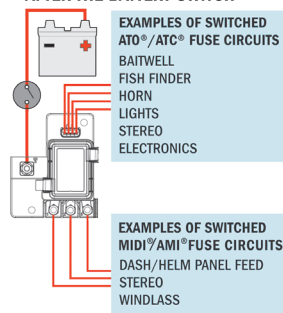
ISO 8846 ignition protected fusing and SAE J1171 external ignition protection meets Coast Guard and ABYC.

SafetyHub 100 Fuse Block

FUSE BLOCK CONNECTED BEFORE THE BATTERY SWITCH

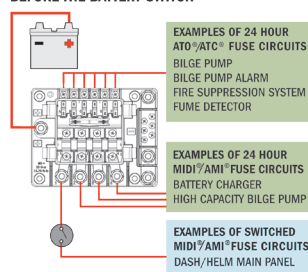


FUSE BLOCK CONNECTED AFTER THE BATTERY SWITCH

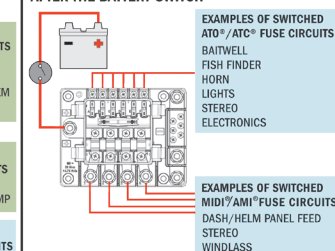


SafetyHub 150 Fuse Block

FUSE BLOCK CONNECTED BEFORE THE BATTERY SWITCH



FUSE BLOCK CONNECTED AFTER THE BATTERY SWITCH



PART NO.	MFG#	DESCRIPTION
3260110	7748-BSS	SafetyHub 150, 4 & 6 Pos.
3260111	7725-BSS	SafetyHub 100, 3 & 4 Pos.